

# Flemington local action plan 2022–23 overview

This plan transforms the needs, ideas and goals of residents into:



that will have

**+ positive and lasting effects**

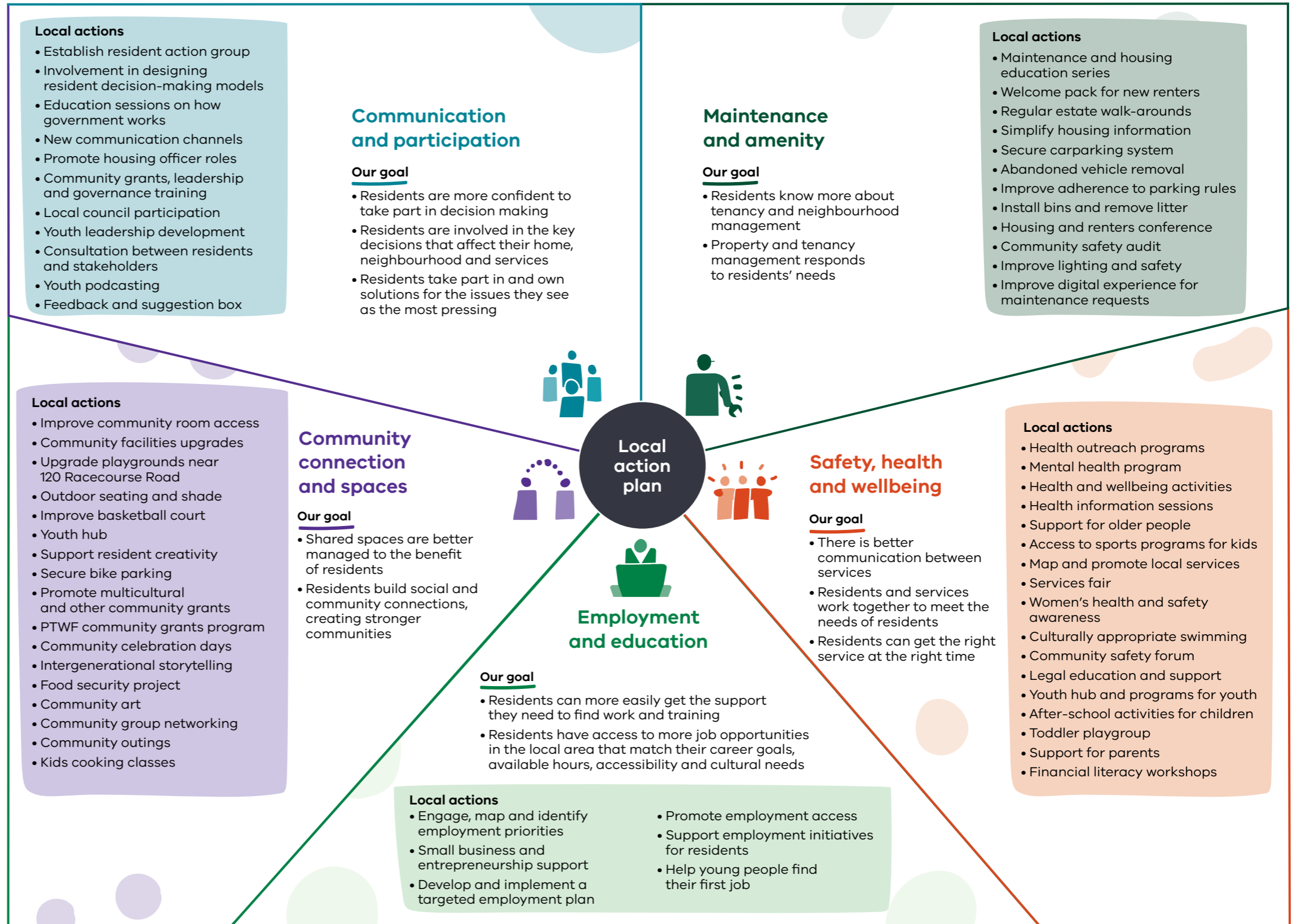
through



The actions set out in this plan are based on community feedback from 2021–22.

Under each focus area, the plan outlines:

- **What we heard** from residents about the issues they experience
- **What residents want** to see change, their ideas and aspirations
- **What we will achieve** in this focus area
- **What we will do** to address these aspirations, needs and issues. Many of these ideas have been co-developed with residents, and are being delivered in partnership with residents, community organisations, the local council and other partners.



To receive this document in another format, [email the Paving the Way Forward team](mailto:PavingTheWayForwardNMF@dhhs.vic.gov.au) <PavingTheWayForwardNMF@dhhs.vic.gov.au>.

Authorised and published by the Victorian Government, 1 Treasury Place, Melbourne.

Paving the Way Forward is a Victorian Government initiative supported by the Department of Families, Fairness and Housing.

In partnership with Cohealth, North Melbourne Language & Learning, Drummond Street, and Mission Australia.

© State of Victoria, Australia, Department of Families, Fairness and Housing, October 2022.

ISBN 978-1-76130-042-4 (pdf/online/MS word)

Printed by Snap Melbourne Latrobe Street (2210336).